

QE PARK BAPTIST CHURCH NOTICES – Week of 24th August 2025

Sunday 24th August: All-age Sunday Worship 10.30-11.45am Thursday Life Group. "I am the light of the world" John 8:12

Tuesday 26th August: Morning Prayer 9 - 10am. in the Prayer den. All welcome.

- **Renew QE Park 12 - 3pm.** in the ground floor room.
- **Book Club 7.30-9pm in Refresh.** No particular book to study – come along to discuss books you've enjoyed and discover some new ones. Book swap available. **Contact Louise.**

Wednesday 27th August: KidsZone 2025: 10am – 12.30pm. QE Park Centre

Thursday 28th August: Thursday Life Group 7 - 9.30pm. Contact Pam or Ray

- **Ladies Life Group 7-8.30pm** in Refresh. Contact Sheila or Lauren.

Various Life Groups meet on Tuesdays and Thursdays. If you are interested in joining a group please contact the church office on 01483 235185 or admin@qeparkbaptist.org.uk

Friday 29th August: KidsZone 2025 – Final session: 10am – 12.30pm. QE Park Centre

Saturday 30th August: Lego Church 3 - 4.30pm. Contact Louise on church.events@qepbc.org.uk if you are able to be there to help/mingle.

- Kate Whiting is on sabbatical until the end of August. Please contact another member of the Leadership Team in her absence: Paul Hammond, Alex Mole, Louise Mitchell or John Cooper.
- Pastoral Team: for any pastoral concerns, or if you need pastoral support, contact the Pastoral Care team on pastoral.team@qeparkbaptist.org.uk



Easyfundraising:

Scan the QR code or use the link below to sign up to support QE Park Baptist Church through easyfundraising. You can raise funds with your online shopping at many outlets, including several major supermarkets, including Tesco and Sainsburys.

<https://join.easyfundraising.org.uk/qeparkbaptistchurch>

FURTHER AHEAD

Sunday 31st August: All-age Sunday Worship 10.30-11.45am Ladies Life Group. "I am the bread of life" John 6:25-35

Monday 1st September: Muddy Boots Walking Group 10-11.30am. Meet outside QE Park Centre. Contact Jeanette or email nature.walks@qepbc.org.uk for details.

Tuesday 2nd September: Morning Prayer 9 - 10am. in the Prayer den. All welcome.

- **Renew QE Park 12 - 3pm.** in the ground floor room.
- **Tuesday Life Group 6.45-8.30pm.** Contact Tim or Rachel

Friday 5th September: Craft Night 7.30 - 9pm, in Refresh, followed by optional time of prayer.

Sunday 7th September: Sunday Worship 10.30-11.45am Speaker: Kate Whiting

Monday 8th September: Muddy Boots Walking Group 10-11.30am. Meet outside QE Park Centre. Contact Jeanette or email nature.walks@qepbc.org.uk for details.

Tuesday 9th September: Morning Prayer 9 - 10am. in the Prayer den. All welcome.

- **Renew QE Park 12 - 3pm.** in the ground floor room.

Wednesday 10th September: Diddy Disciples and Little Lambs toddler group 10-11.30am in the main hall. **Contact Louise**

- **Bird Tweets Walks 10.30am-12.30 pm.** This is a [Guildford Walkfest](#) event. A gentle stroll around Unstead Nature Reserve to observe birds. Note: transport available from QE Park Baptist Church & Centre. **Contact John** or email nature.walks@qepbc.org.uk for details.

Thursday 11th September: Thursday Life Group 7 - 9.30pm. **Contact Pam or Ray**

- **Ladies Life Group 7-8.30pm** in Refreh. **Contact Sheila or Lauren.**

Friday 12th September: Pottery Painting evening. 7.30-9.30pm. The event will be run by www.glazydaze.co.uk. All materials provided. There will be a range of plates, mugs or bowls to choose from. £5 pp plus the cost of the pottery. For more information and to book, contact **Sheila** at refreshcafe@geparkbaptist.org.uk

Saturday 13th September: Planning meetings for Sunday Kids (9.30am) and Lego church (10.45am)

Sunday 14th SEPTEMBER: Sunday Worship 10.30-11.45am Speaker: Kate Whiting.

- **Church BBQ 12pm** after the Service. Email church.events@qepbc.org.uk to confirm attendance and notify the organisers of any dietary requirements or allergies.

ADVANCE NOTICES FOR OCTOBER

Saturday 4th October: Pastoral Team Meeting. 10.30am-12 noon at Jenny's house.

Saturday 11th October: 4-Steps Prophecy School 10am-3pm. If you are interested in attending let Tim know, or register via [4 Steps Prophecy School Event](#). **Contact Tim with any questions.**

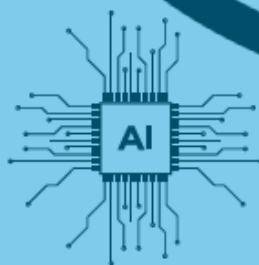
EXTERNAL NOTICES

Throughout September. Guildford Walkfest: see [Guildford Walkfest](#) website for details of all walks. Contact **Jeanette** or email nature.walks@qepbc.org.uk for details of events starting from QE Park Centre.

Petition concerning Gaza, Israel, West Bank and East Jerusalem: BMS are encouraging Christians and churches to sign a petition calling on all governments with influence to help to bring a immediate end to the atrocities in the area. To read their statement and sign the petition, go to <https://bmsworldmission.org/gaza-statement>

Healthwatch Surrey champions the voice of local people to shape, improve and get the best from NHS, health and social care services. As an independent statutory body, they have the power to make sure decision makers listen to feedback. They are undertaking a research project which seeks to understand the barriers to online access to GP services, i.e. access through the NHS App or online forms on GP practice websites. **See the flyer screenshots provided below for how to participate in this survey.**

If you would like more information about Healthwatch Surrey and the work they do, follow this link: [Healthwatch Surrey](#).



- **Do you use the NHS App or your GP practice website?**
- **Are there reasons you don't use these?**
- **What is your view about AI being used by your GP practice?**

Please share your experiences with us



Please complete our survey

Scan the QR code
or use the link below.

[https://www.smartsurvey.co.uk/s/
HwSyOnlineAccessGPServices/](https://www.smartsurvey.co.uk/s/HwSyOnlineAccessGPServices/)

Survey closes: 26 September 2025

Please contact us if you need a paper copy of the survey – we will be happy to send one out to you.



Healthwatch Surrey

About us

Healthwatch Surrey champions the voice of local people to shape, improve and get the best from NHS, health and social care services.

We can also provide reliable and trustworthy information and signposting about these services to help you get the support you need.

Contact us



0303 303 0023



07592 787533 (WhatsApp & text only)



enquiries@healthwatchsurrey.co.uk



www.healthwatchsurrey.co.uk



healthwatch
Surrey